

**GP-GS-Z1**

Ink Colors :

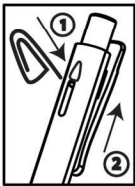


Bullet Tip

**0.7 mm**

**SAFE CLICK**

**Directions:**



- ① Use a paper clip to eject push button.
- ② Remove push button and replace a new refill.



\*Contains Sharp Part. Not Suitable For Children Under 3 Year Old.

**1 PIECE**

**2-PC OPP BAG**

**3-PC OPP BAG**

Pack Size: 24 packs / bag | 720 packs / carton

Pack Size: 24 packs / bag | 720 packs / carton

	GP-GS-Z1-BL	
	GP-GS-Z1-BK	
	GP-GS-Z1-RED	

GP-Z1-2BL	
GP-Z1-2BK	
GP-Z1-2RED	

GP-Z1-3M	
GP-Z1-3BL	
GP-Z1-3BK	



Refills are suitable use for Z1 and EX7 gel pens.



**10-PC BOX**

**PEN+REFILL PACK**

**REFILL PACK**

Pack Size: 10 boxes / bag

Pack Size: 24 packs bag | 720 packs / carton

Pack Size: 24 packs bag | 720 packs / carton

GP-Z1-10M	
GP-Z1-10BL	
GP-Z1-10BK	

GP-Z1R-1BL	
GP-Z1R-1BK	
GP-Z1R-1RED	

RF-GS-Z1-BL	
RF-GS-Z1-BK	
RF-GS-Z1-RED	